

EXHIBIT "B"

THE GATES AT THE LEGACY SECTION VI

KEYSTONE MAILBOX WITH DELUXE POST & ADDRESS PLAQUE

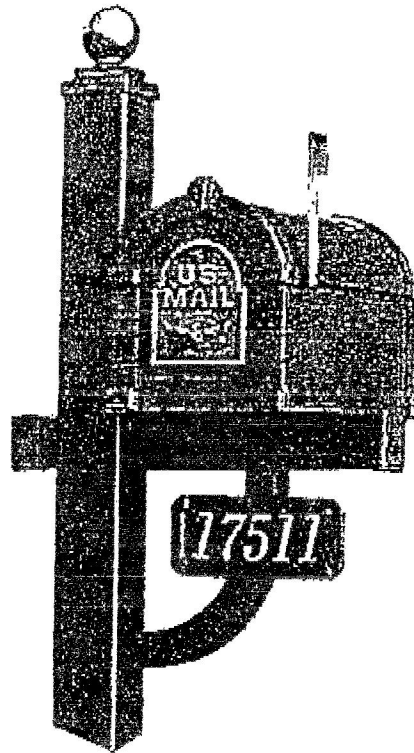
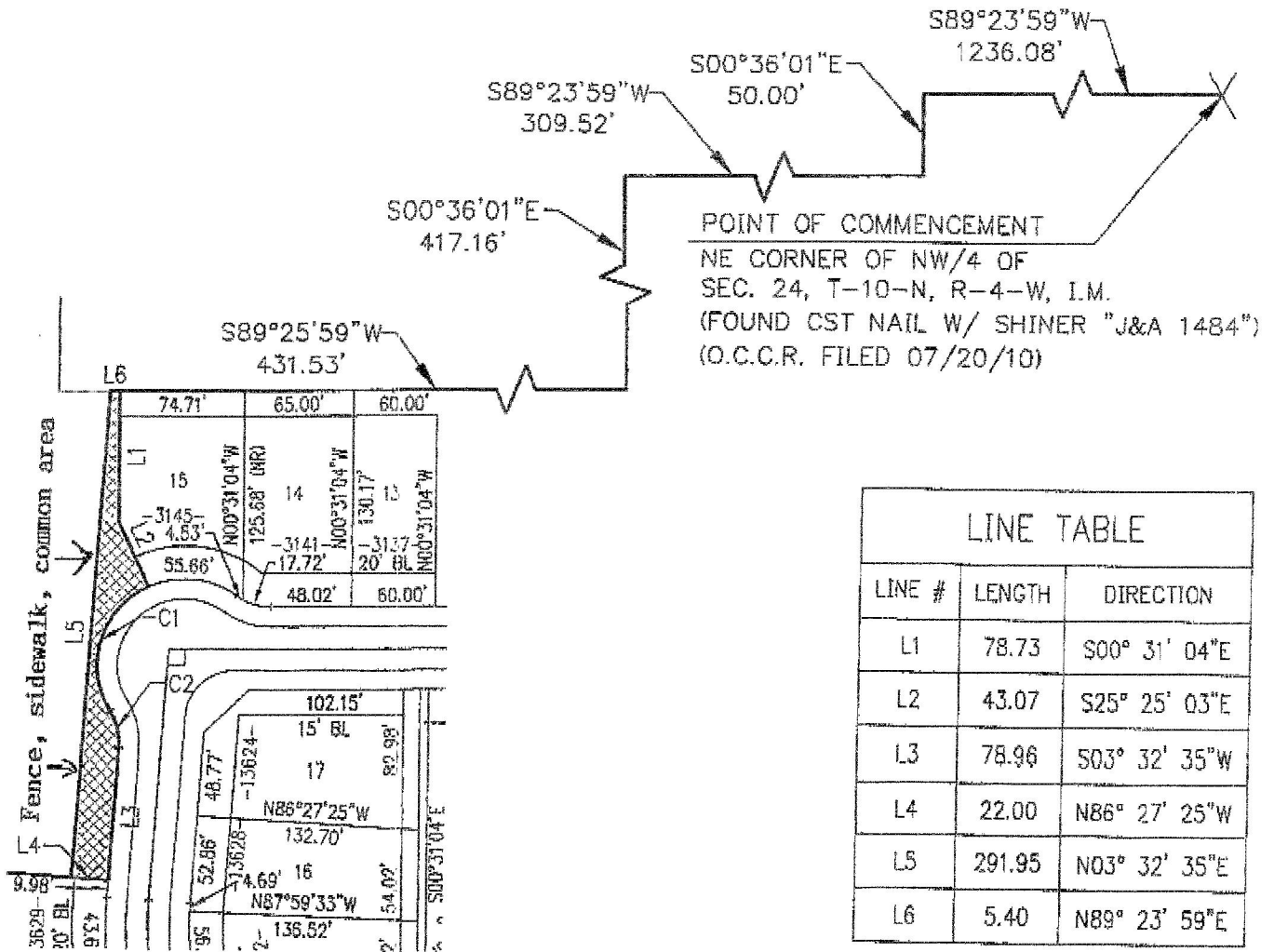


EXHIBIT "D"



CURVE #	LENGTH	RADIUS	DELTA	CHORD DIRECTION	CHORD LENGTH
C1	88.46	52.00	97.47	S15° 50' 55"W	78.17
C2	22.25	35.00	36.43	S14° 40' 16"E	21.88



GRAPHIC SCALE IN FEET



<p><b>Crafton Tull</b> architecture   engineering   surveying 401.797.0270   401.797.0271 www.craftontull.com</p>	<p>214 E. North Oklahoma City, Oklahoma 73104</p>
	<p>SHEET NO.: 1 of 1 DATE: 11-16-11 PROJECT NO.: 106072-00</p>

EXHIBIT "C"

LEGAL DESCRIPTION – THE LEGACY VI  
COMMON AREA EASEMENT

A tract of land lying in the Northeast Quarter (NE/4) of Section Twenty-four (24) of Township Ten North (T-10-N), Range Four West (R-4-W) of the Indian Meridian (I.M.), Cleveland County, Oklahoma; said tract being more fully described as follows:

COMMENCING at the Northeast Corner (NE/C) of said Northeast Quarter (NE/4);  
Thence S 89°23'59" W along the North line of said Northeast Quarter (NE/4) a distance of 1236.08 feet;  
Thence S 00°36'01" E a distance of 50.00 feet to a point being the Northeast Corner of "The Legacy Section VI" according to the recorded plat thereof;  
Thence along the boundary of said "The Legacy Section VI" the following three (3) calls:  
    Thence S 89°23'59" W a distance of 309.52 feet;  
    Thence S 00°36'01" E a distance of 417.16 feet;  
    Thence S 89°23'59" W a distance of 431.53 feet to the Point of Beginning;  
Thence S 00°31'04" E a distance of 78.73 feet;  
Thence S 25°25'03" E a distance of 43.07 feet to a point on a curve;  
Thence along a curve to the left with a radius of 52.00 feet, a chord bearing of S 15°50'55" W, and a chord distance of 78.17 feet for an arc distance of 88.46 feet;  
Thence along a curve to the right with a radius of 35.00 feet, a chord bearing of S 14°40'16" E, and a chord distance of 21.88 feet for an arc distance of 22.25 feet;  
Thence S 03°32'35" W a distance of 78.96 feet;  
Thence N 85°27'25" W a distance of 22.00 feet;  
Thence N 03°32'35" E a distance of 291.95 feet;  
Thence N 89°23'59" E a distance of 5.40 feet to the Point of Beginning; said tract containing 0.10 acres, more or less.

November 16, 2011